



Cisco DNA Service for Bonjour

Bonjour Services Use Cases

Various Use Cases for IT and Users

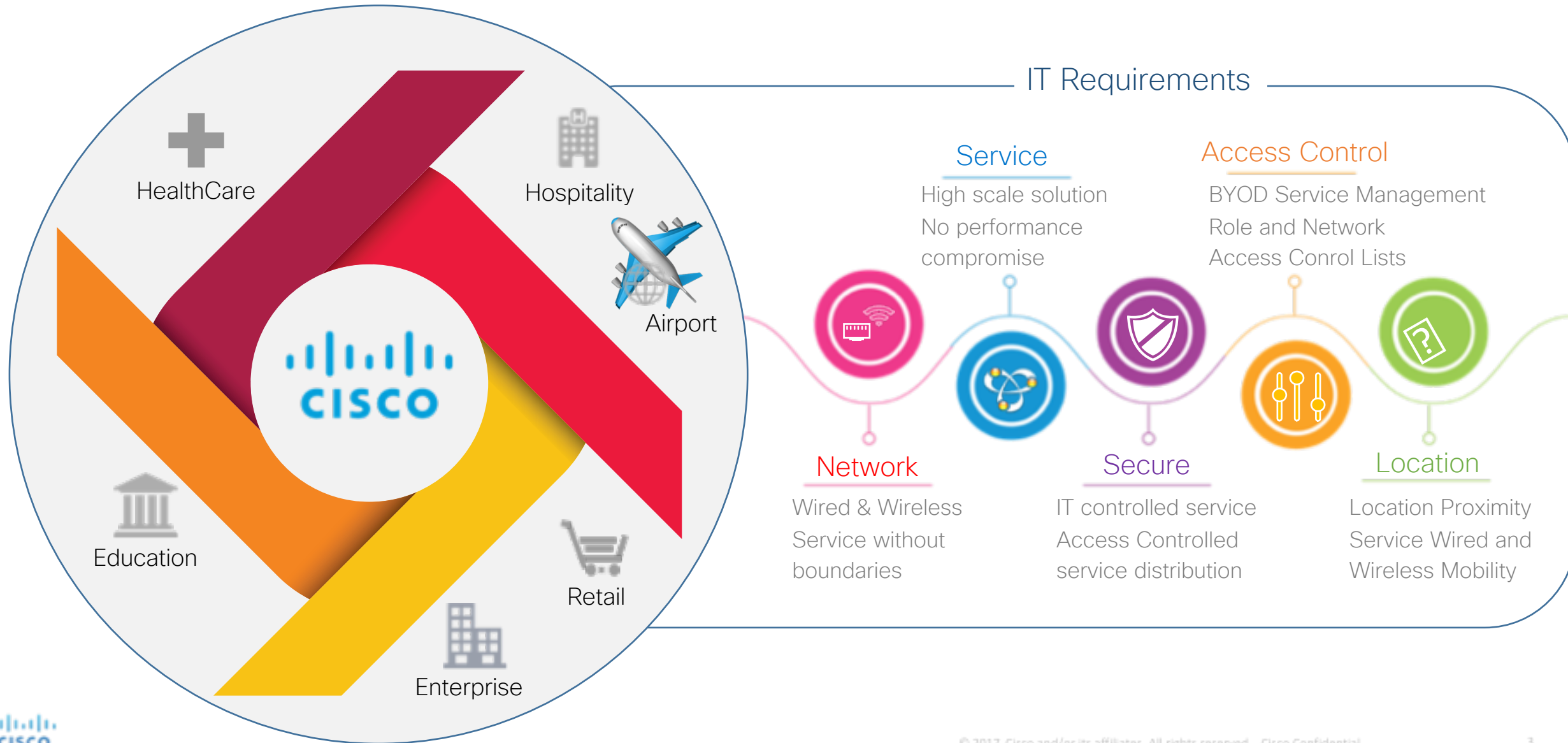


Bonjour enabled devices on the rise!

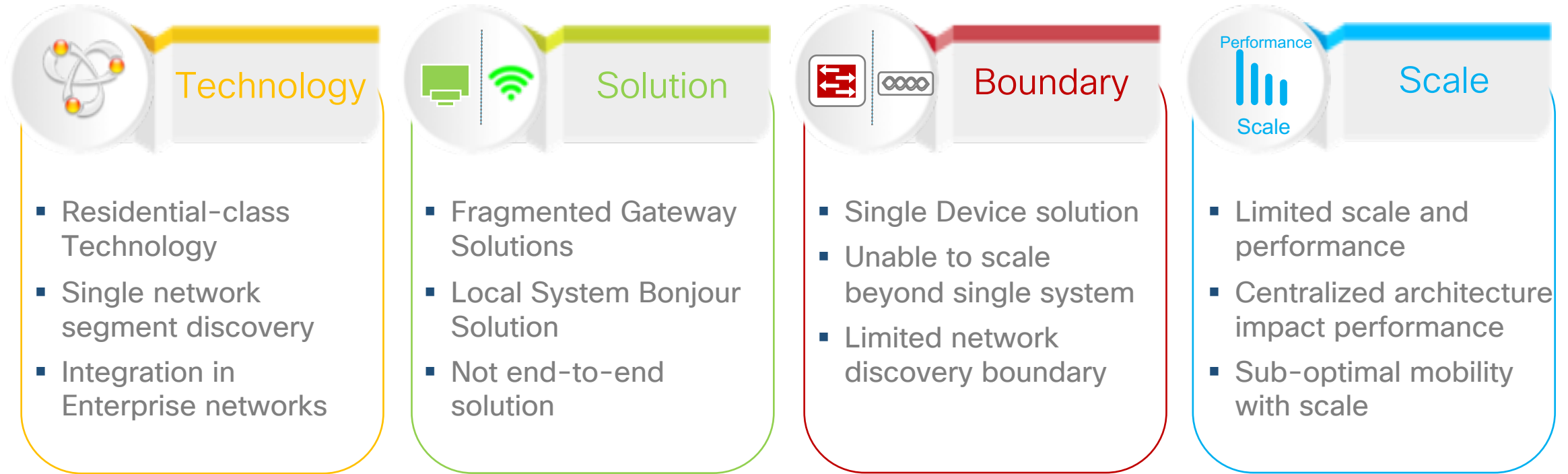


Enterprise-Class Zero-Conf Solution

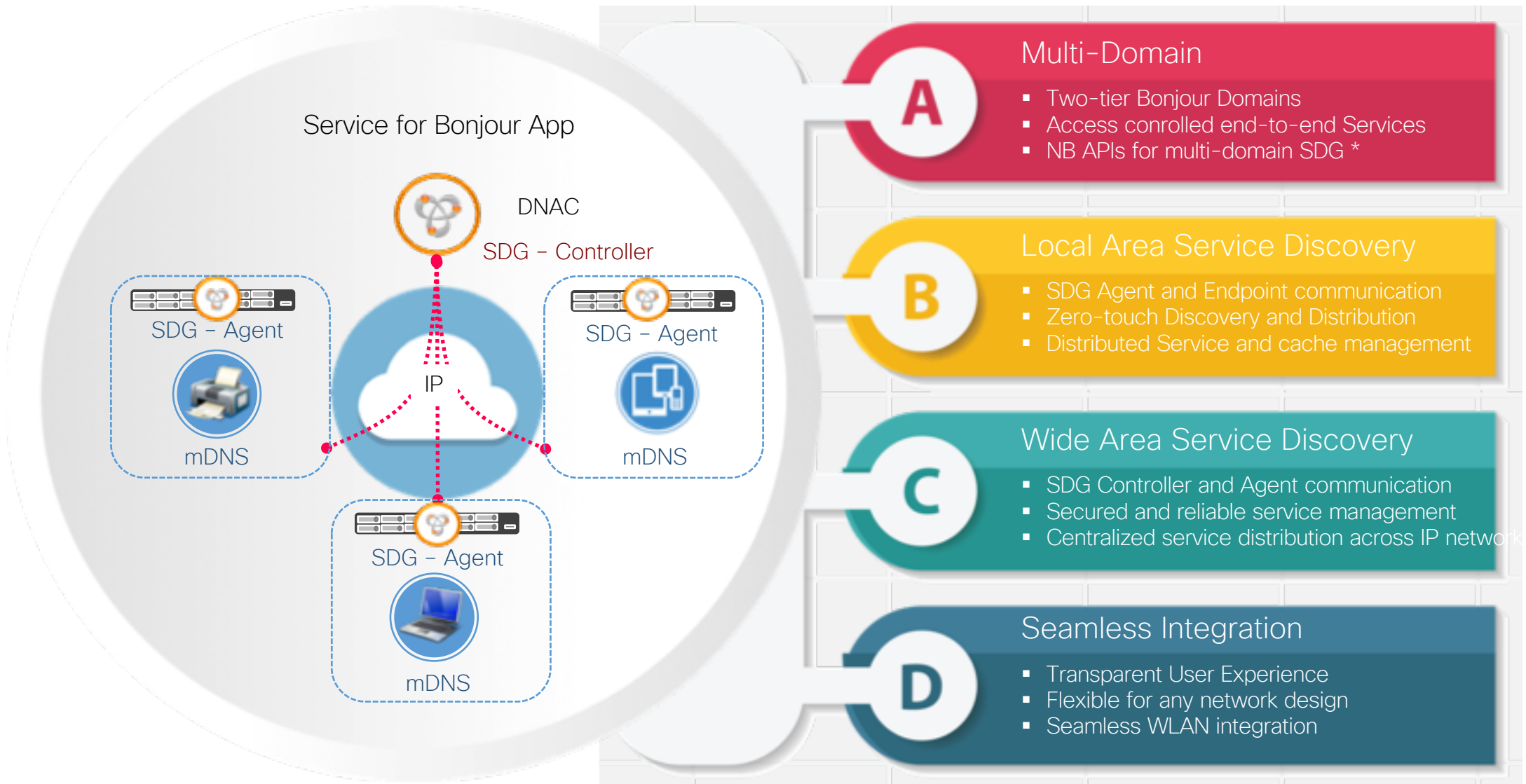
Cross-Verticals common IT Requirements



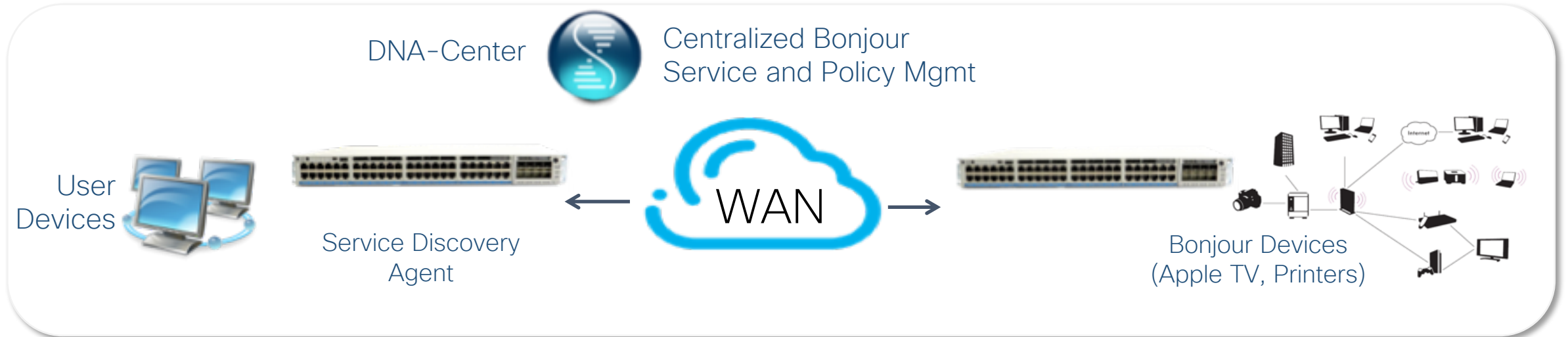
Current Limitations for Service Discovery



Distributed Architecture for “Service for Bonjour”



Bonjour Service Discovery Without Boundaries



Traditional Bonjour



- Single Gateway solution, cannot scale across enterprises
- No access control
- Limited Management capabilities

DNA Service for Bonjour



- **Enables** Discovery and service distribution across WAN
- **Access Controlled**
- **Simplified** Intuitive Controller Based Management

Simplified Education Experience



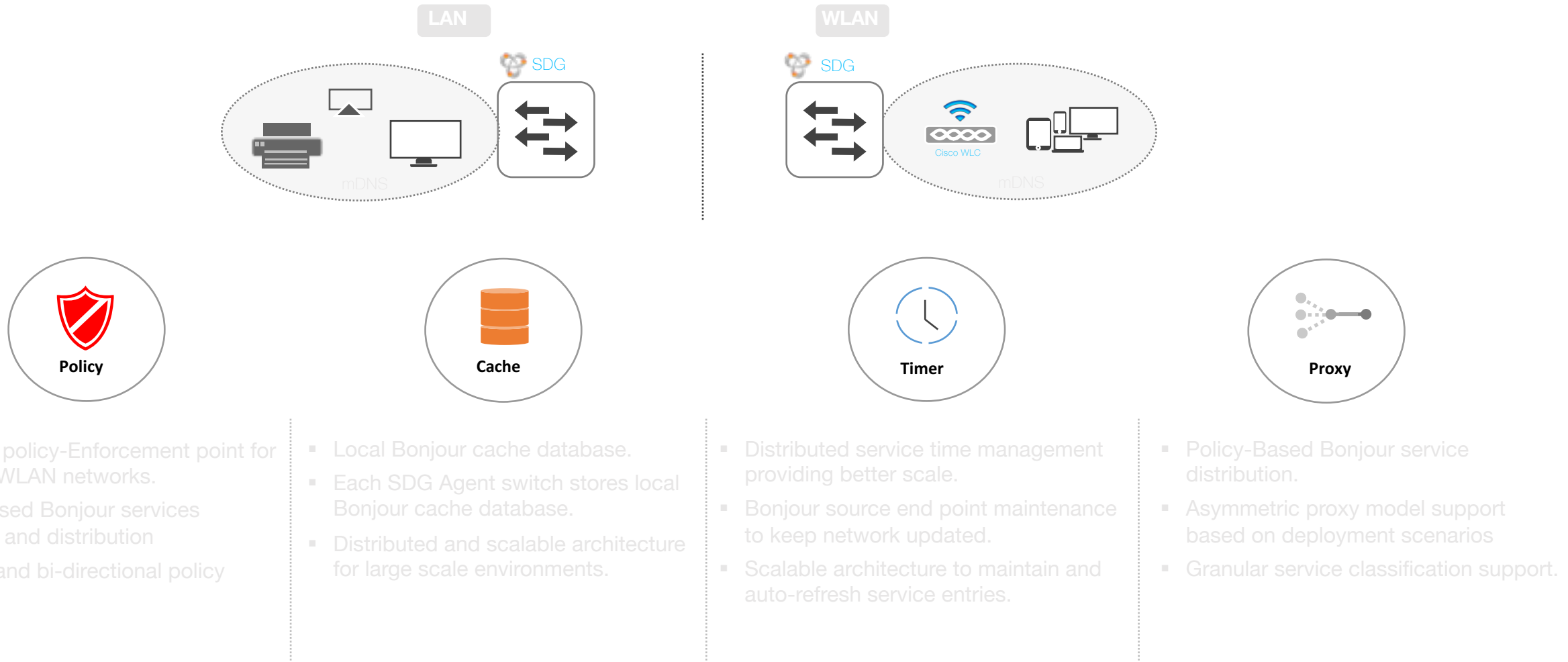
- Scalable LAN/WLAN architecture supporting distributed sites of an educational institution
- Access Controlled Bonjour services discovery and distribution between Teachers, Students, Admins.
- Centralized IT administration and Policy control
- Transparent solution supporting Bonjour enabled devices or any Multicast DNS compliant end-points

Interactive Healthcare Experience



- Interactive and digital communication between Healthcare professionals and patients
- High-tech patient rooms from managing room environments, connect care team and family
- Secure network and access controlled service distribution protects privacy and compliance

Local Area Bonjour Domain – Key Function

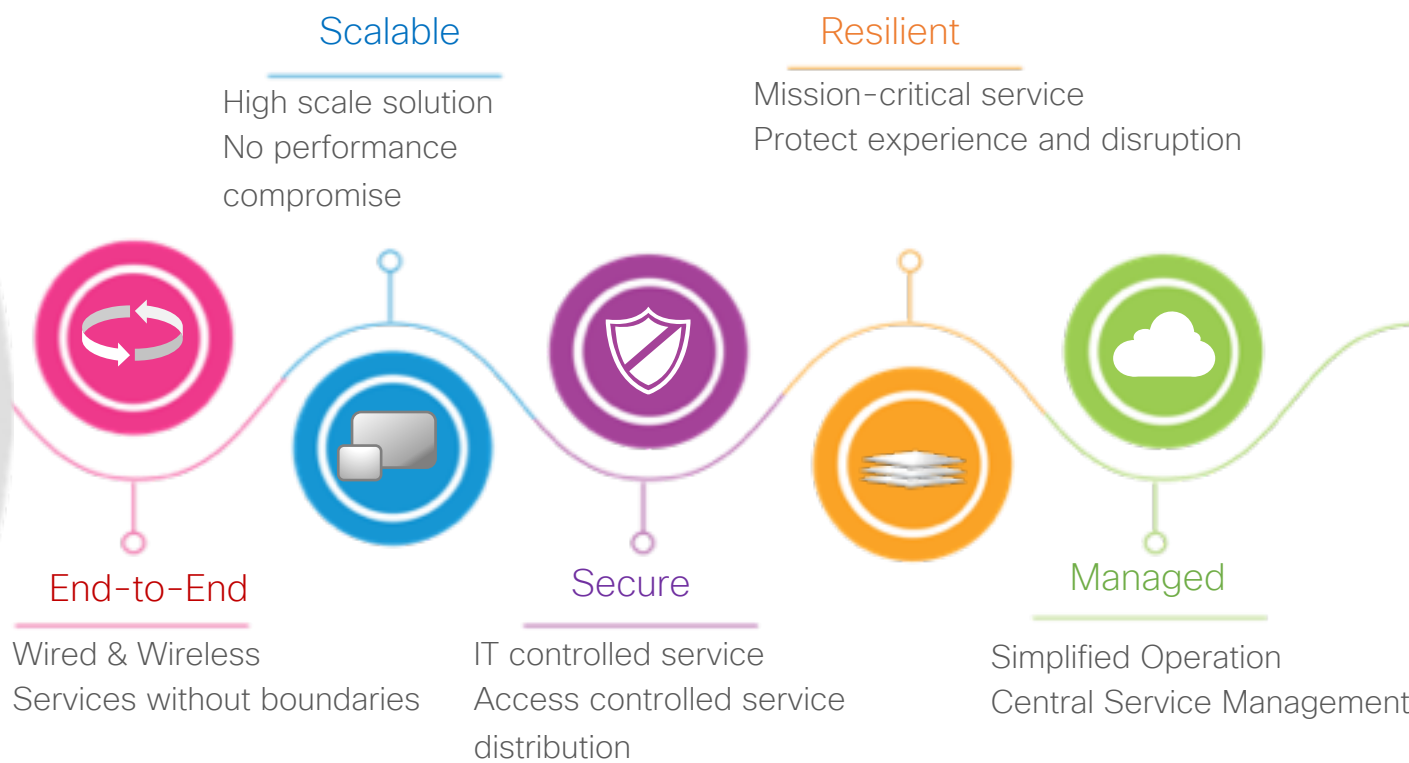
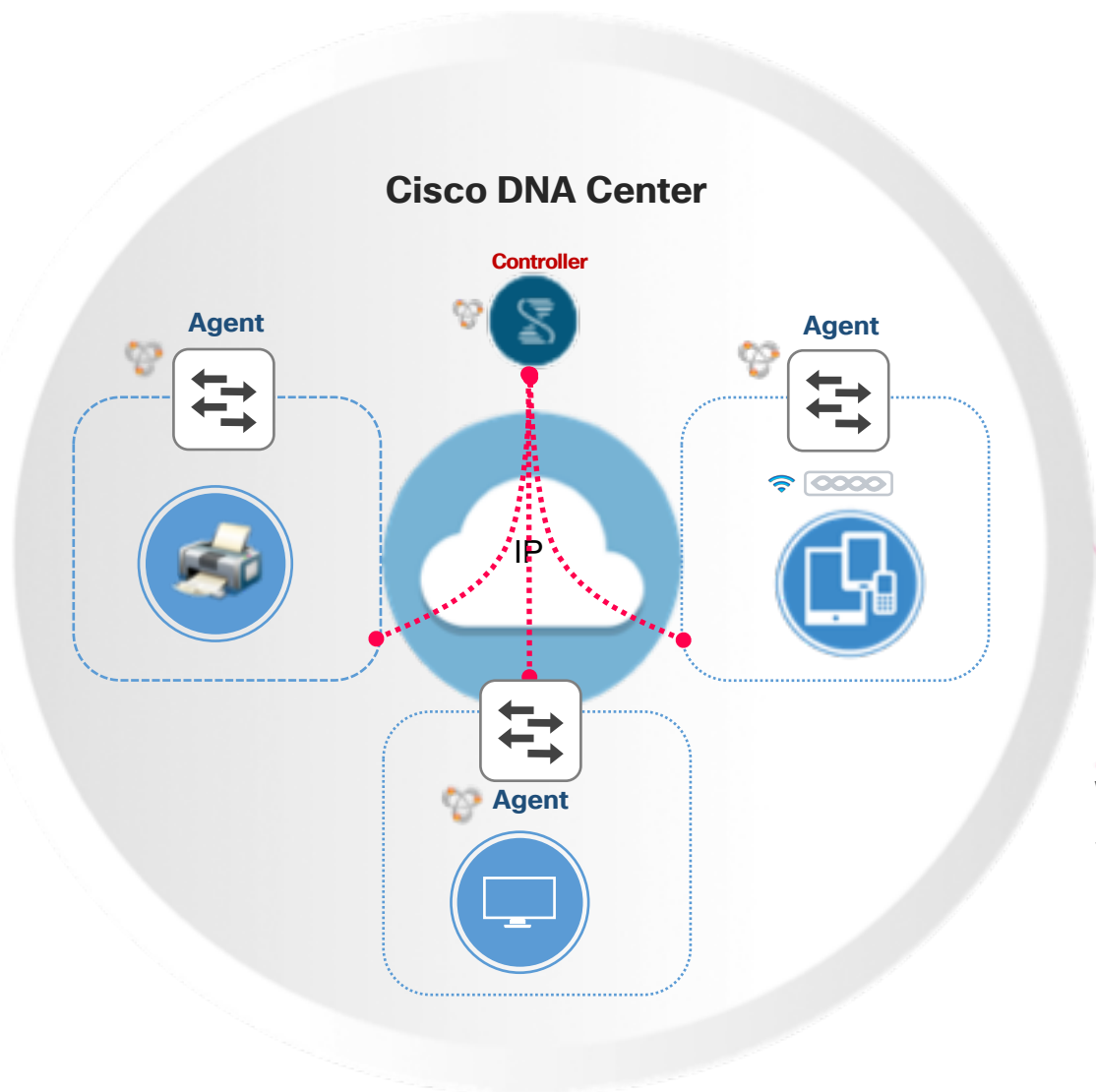


Enterprise Class Bonjour Experience



- Seamless Wired and Wireless Integration
- Access Controlled Service Distribution
- Simplified Centralized Management
- Protect User Experience and limit Service Disruption
- Higher scale

Cisco DNA Service for Bonjour



What's needed to implement at the UofU

- Create policies to define management
- Technical updates
 - Controller Deployment
 - Network design
 - Routing protocol changes (Cisco Bonjour Control Policy)
- What should we do until then?
 - Bluetooth discovery

Thank you.

