

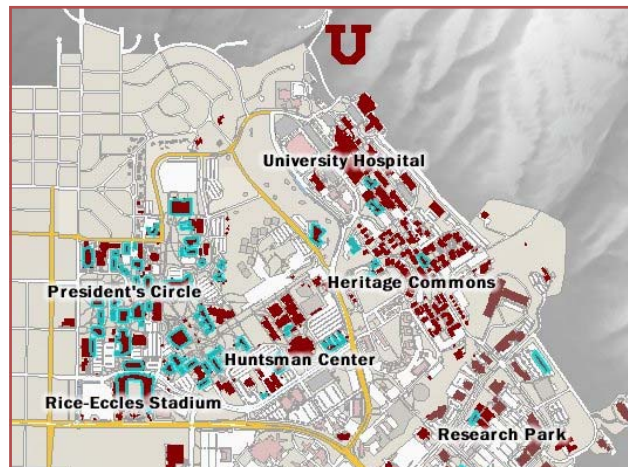
Configuring Windows XP

- Right click the **Wireless Network Connection Not connected**. Right-click here for more options button.
- Select the **View Available Wireless Networks** menu item.
- The **Wireless Network Connection** window opens. Click the **Change advanced settings** button.
- The **Wireless Network Connection Properties** window opens. Select the **Wireless Networks** tab. Click the **Add...** button.
- Enter "uconnect.utah.edu" in the **Network Name (SSID)** field. Select the **Network Authentication** combo box. Select the **WPA** item.
- Select the **Data encryption** combo box. Select the **TKIP** item.
- Select the **Authentication** tab.
- Uncheck the **Authenticate as computer when computer information is available** check box.
- Select the **EAP type** combo box. Select the **Protected EAP (PEAP)** item.
- The **Protected EAP Properties** dialog opens. Click the **Configure...** button.
- The **Automatically use my Windows logon name and password (and domain if any)** box should be unchecked. Click the **OK** button. Click the **OK** button. Click the **OK** button one more time.
- The **Enter Credentials** window opens. Enter your uNID and password. Click the **OK** button.
- The **Validate Server Certificate** window opens. Click **OK**.

For more information go to <http://wireless.utah.edu/>



Campus Wireless Map



To view a larger image, go to <http://www.map.utah.edu/>
(and check the Wireless Zones tab)

Knowledge Commons

*Marriott Library
Level Two*



Marriott Library
Knowledge Commons

Laptop Wireless connection setup

(for Windows XP, Windows Vista and Mac OS X)



Marriott Library

Knowledge Commons

295 South 1500 East
Salt Lake City, UT 84112-0860
Phone: (801) 581-6494
Fax: (801) 585-3464
E-mail: suggest@scl.utah.edu



Configuring Mac OS X

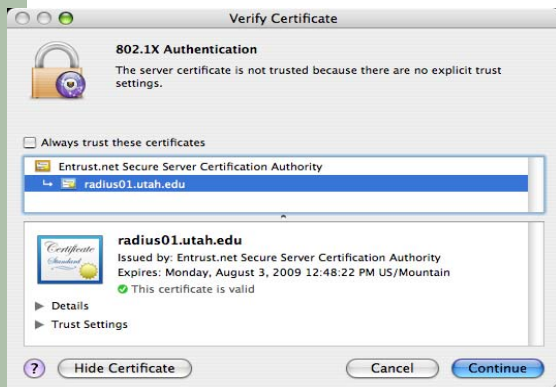
- Click on your top tool bar on the wireless icon.
- Click on the **uconnect.utah.edu** SSID.
- The **AirPort** window appears. Enter your **unid@utah.edu** and password in the correct fields



- Click **OK**. The **Verify Certificate** window appears.



- Click **Show Certificate** to see the Entrust certificate authority information.



- Check the **Always trust these certificates** box. Click **Continue**.
- Then click **Connect**, and you should see **authenticating** in the Status field, followed shortly by **Connected via PEAP (Inner Protocol: MSCHAPv2)**.

Configuring Windows Vista

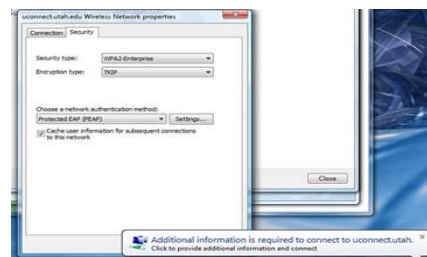
- From your desktop, right-click the **Not Connected Wireless networks are available** button, or open your **Control Panel**.
- Select the **Network and Sharing Center** menu item.
- The **Network and Sharing Center** window opens. Select the **Manage wireless networks** link.



- The **Manage Wireless Networks** window opens. Click the **Add** button.
- The **Manually connect to a wireless network** window opens. Click the **Manually create a network profile** button.
- Enter the network name: "uconnect.utah.edu". Select the **WPA-Enterprise** item in the **Security type** combo box.
- Select the **Encryption type** combo box. Select the **TKIP** item. Click the **Next** button.



- Click the **Change connection settings** button. The **uconnect Wireless Network** properties dialog opens. Select the **Security** tab.



Note: If you wish to be prompted each time for your username and password, you need to uncheck the **Cache user information for subsequent connections to this network**.

- Click the **Settings...** button. Click the **Configure...** button. Uncheck the **Automatically use my Windows logon name and password (and domain if any)** check box.



- Click the **OK** button. Click the **OK** button again. Click the **OK** button one last time.
- Click the **Close** button. Click the **Close** button again. Click the **Close** button one last time.
- Click the **Additional information is required to connect to uconnect** balloon. The **Enter Credentials** window opens. Enter your uNID and password (no domain information needed).



- The **Validate Server Certificate** window opens. The **Certificate** dialog opens. Click the **OK** button. Click the next **OK** button.

